

No New Invaders- Engaging for Success

Gail Wallin
Invasive Species Council of BC

What do these have in
common?



European fire ant
Myrmica rubra

Photo: Sean McCann

What do these have in common?



Emerald ash borer
Agrilus planipennis

Photo: Daniel Herms, Ohio State University, Bugwood.org

What do these have in common?



Asian longhorned beetle
Anoplophora glabripennis

Photo: Bugwood.org

ISC Invasive Species
Council of BC

What do these have in common?



Gypsy moth
Lymantria dispar

Photo: USDA, Bugwood.org

isc Invasive Species
Council of BC

What do these have in common?



Japanese beetle
Popillia japonica

Photo: USDA, ARS, Bugwood.org

isc Invasive Species
Council of BC

What do these have in common?



Brown marmorated stink bug
Halyomorpha halys

Photo: Gary Bernon, USDA APHIS

isc Invasive Species
Council of BC


isc Invasive Species
Council of BC

What is common?

- What do you find is common?
- What would your neighbours say is common?



Why do we think people should care?




The background image shows a scenic mountain landscape with snow-capped peaks and dense evergreen forests. Overlaid on this image are five colored circles, each containing a text element. The circles are arranged in a cluster: a green circle at the top left, a yellow circle at the top right, an orange circle at the bottom left, a blue circle at the bottom center, and a grey circle at the bottom right. The text inside the circles lists various environmental impacts. In the bottom left corner, there is a logo for the Invasive Species Council of BC.

- Decrease in biodiversity
- Loss of endangered species
- Threat to critical habitat
- Economic impacts to forests
- Loss of forest cover, grasslands

isc Invasive Species Council of BC

Why do they really care?



The background image shows a young child with curly hair swinging happily on a swing set at a park. The child is wearing a patterned shirt and shorts. The swing set is made of metal chains and a black seat. In the background, there are green trees, a grassy area, and a marina with several sailboats. The sky is clear and blue. A yellow banner at the top of the image contains the title. In the bottom left corner, there is a logo for the Invasive Species Council of BC. In the bottom right corner, the location is noted as Bronte Harbour, Oakville, ON.

isc Invasive Species Council of BC

Bronte Harbour, Oakville, ON

Why do they really care?



Over 60%
of invasive plants were
introduced by
people



ISC Invasive Species
Council of BC

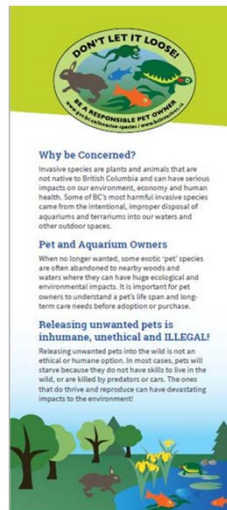




Provide Tools for Positive Action



Provide Tools for Positive Action





How will you take action?



